



**ALAMEDA
MUNICIPAL POWER**

The Flash

Volume 33 • Number 4 • April 2020

Connect with us at www.alamedamp.com



GET UP TO \$2,800 BACK WITH YOUR NEXT WATER HEATER PURCHASE

If it's time for a new water heater, make the clean and green choice. Switch to an electric heat pump water heater (HPWH), now powered by 100% clean energy in Alameda.

THE GREEN CHOICE

When you choose to replace your natural gas-powered water heater with an efficient electric model, you will reduce your carbon footprint.

HOW IT WORKS

A heat pump water heater operates like a refrigerator in reverse. While a refrigerator pulls heat from the inside and dumps that heat into the surrounding air, a heat pump water heater takes heat from the room and transfers it to

the water inside the insulated tank. This works especially well in mild climates like we have in Alameda. Since this type of water heater doesn't generate heat directly, it can be two or three times more efficient than a conventional electric water heater.

Get more details on how heat pump water heaters work at www.alamedamp.com

GET UP TO \$2,800 BACK IN LOCAL INCENTIVES

You can combine incentives

from Alameda Municipal Power and the Bay Area Regional Energy Network with a federal tax credit to help significantly lower the cost of the water heater.

BayREN provides up to \$1,000 toward the purchase and installation when you replace a heat pump water heater and work with their pre-approved contractors. You can find a list of contractors at bayrenresidential.org

Then, you can use AMP's

rebate to make your purchase even more affordable. You can now get as much as \$1,500 in cash rewards—increased from \$500—when you purchase a heat pump water heater. Learn more: www.alamedamp.com/rebates

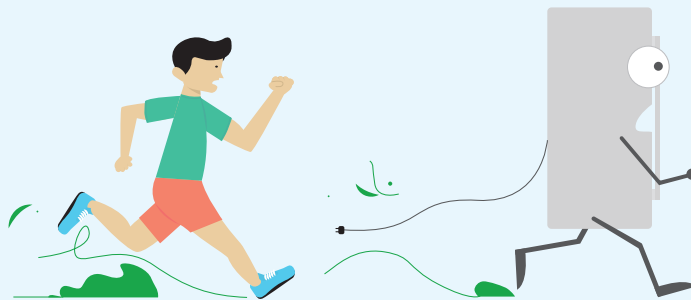
In addition to using the AMP and BayREN rebates, don't forget to claim your \$300 federal tax credit for the purchase of a heat pump water heater. Learn more at www.energystar.gov

REFRIGERATOR REBATES END ON MAY 29

If you have an old-school refrigerator, you still have time to recycle it with AMP and replace it with a new energy-saving model. See the savings we offer below.

LAST CHANGE

Get a \$50 rebate for recycling your old fridge and replacing it with an Energy Star-certified model. AMP is also offering a \$35 rebate for refrigerator recycling only. Apply for the rebate today! Find out more: www.alamedamp.com/rebates



PUB TO CONSIDER NEW ELECTRIC RATES AT APRIL MEETING

At its regular April 27 meeting, the Public Utilities Board (PUB) will consider a recommendation to increase electric rates up to 2 percent for commercial and residential customers, effective July 1, 2020. The percentage of the increase will vary depending on the customer's rate class.

PUB: CONTINUED ON BACK

PUB TO CONSIDER NEW ELECTRIC RATES AT APRIL MEETING (CONTINUED)



The meeting will begin at 7 p.m. at the AMP Service Center.

ANNUAL BUDGET WORKSHOP

Prior to the regular PUB meeting, the board will gather for its annual budget workshop at 4:30 p.m. at the AMP Service Center. The final budget will be adopted at the PUB's June 15 meeting.

AGENDA ITEMS FROM CANCELED MARCH MEETING

Due to the COVID-19 public health crisis, the PUB's March 16 meeting was canceled. Agenda items from the March meeting will be moved to the April meetings. The pro-forma will be included in a special board meeting at 4 p.m. on April 27. All other March agenda items will be included in the regular meeting at 7 p.m.

Materials for the three meetings will be available on AMP's website on Monday, April 20. For more information, visit www.alamedamp.com



CELEBRATE NATIONAL LINEMAN APPRECIATION DAY

April is a time to honor the Earth AND your local AMP line-workers. National Lineman Appreciation Day falls on April 18 each year.

ENSURING PUBLIC SAFETY

These skilled professionals are trained to work with hazardous electrical equipment and ensure public safety. Be sure to thank Alameda lineworkers for all the work they do to maintain the safety and reliability of our community's electric system.

CONTACT AMP

Customer Service	510-748-3900
After Hours/Emergency	510-748-3902
TDD (hearing impaired)	510-522-7538
Email	amp@alamedamp.com
Internet	www.alamedamp.com

PUBLIC UTILITIES BOARD

Ann McCormick, P.E., President, Laura Giuntini, Commissioner, Jerry Serventi, Commissioner, Jeff Gould, Commissioner, Eric Levitt, City Manager

ALAMEDA MUNICIPAL POWER

Nicolas Procos, General Manager

The FLASH is published as a service to the customer-owners of Alameda Municipal Power. Send comments or questions to email to haley@alamedamp.com



SUPPORT ROBOTICS EDUCATION IN ALAMEDA

Do you know the easy way to support technology education for Alameda public school students? Join Power Up for Learning (PUFL), a joint program of AMP and the Alameda Education Foundation (AEF). The program supports robotics education, which helps students understand the scientific method and develop vital skills such as collaboration and teamwork.

IMPRESSIVE GROWTH

The robotics program has seen impressive growth since it started in 2017. This year, teams from eleven Alameda public schools are participating. The program's annual robotics competition will be held Saturday, May 9 at Wood Middle School. Teams from the participating schools will aim to wrest the title from the

2019 winner, Ruby Bridges Elementary School.

HOW TO DONATE

Simply fill out the online donation form and choose an amount to be added to your monthly electric bill. Find the donation form at www.alamedaeducation.org

UPDATE ON PROPOSED TIME-OF-USE RATES FOR EV OWNERS

On Feb. 24, the city of Alameda's Public Utilities Board voted not to approve a time-of-use rate plan for residential electric vehicle (EV) owners. Staff received additional comments and feedback from the board and is reviewing options prior to any decision to return to the board seeking approval of the TOU rate plan.

In the meantime, the monthly bill discount that AMP currently provides for EV owners will continue. Thanks to those of you who came out to the board meeting on Feb. 24 or wrote letters to the board to share your thoughts on AMP's proposed time-of-use rate.